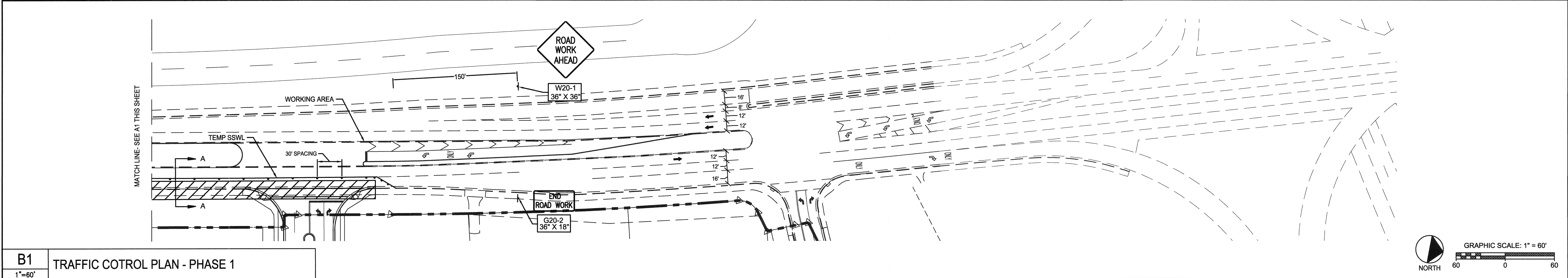
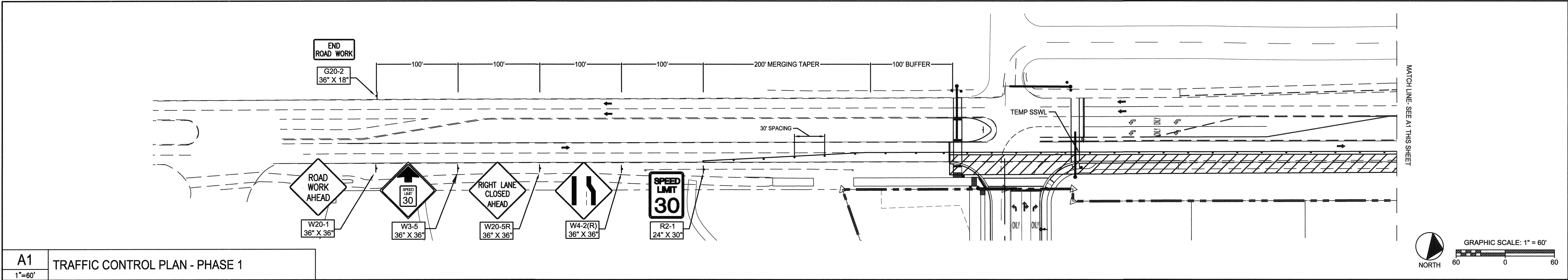


THIS DOCUMENT IS THE PROPERTY OF A2H, INC. AND ALL COMMON LAW, STATUTORY AND OTHER RESERVED RIGHTS SHALL BE RETAINED BY SAME. NO PART OF THIS DOCUMENT IS TO BE REPRODUCED OR TRANSMITTED IN ANY FORM OR BY ANY MEANS, ELECTRONIC OR MECHANICAL, WITHOUT THE WRITTEN PERMISSION OF A2H, INC. ANY CHANGES OR MODIFICATIONS TO THIS DOCUMENT SHALL BE MADE WITHOUT THE WRITTEN PERMISSION OF A2H, INC. THE LIABILITY OF ANY CLAIM IS ACCEPTED BY THE RESPONSIBLE PARTY MAKING THE CHANGE.

metabrain
Wed, 29 Aug 2018 2:33pm
C:\Users\jgallagher\Documents\115108-01-TEMPORARY TRAFFIC CONTROL PLAN.dwg
PLOT SCALE: LATEST REV.



1. SEE PAGE 6F-7 MANUAL ON UNIFORM TRAFFIC CONTROL DEVICES (MUTCD) FOR HEIGHT AND LATERAL LOCATION OF SIGNS.
2. ALL TRAFFIC CONTROL DEVICES AND THEIR INSTALLATION SHALL MEET THE STANDARD PRESCRIBED IN THE MANUAL ON UNIFORM TRAFFIC CONTROL DEVICES AND SHALL COMPLY WITH STATE OF TENNESSEE STANDARD SPECIFICATIONS FOR ROAD AND BRIDGE CONSTRUCTION SECTION 712 TEMPORARY TRAFFIC CONTROL.
3. ALL BARRICADES 3' IN LENGTH OR LONGER SHALL HAVE 6" WIDE STRIPES OF ALTERNATING HIGH INTENSITY GRADE RETROREFLECTIVE WHITE AND ORANGE SHEETING. ALL BARRICADES LESS THAN 3' IN LENGTH SHALL USE 4" WIDE STRIPES.
4. THE CONTRACTOR SHALL BE RESPONSIBLE FOR MAINTAINING ALL TRAFFIC CONTROL DEVICES, ON AN AROUND THE CLOCK BASIS, WHETHER OR NOT WORK IS ACTIVELY BEING PURSUED. ANY DEFICIENCIES NOTED SHALL BE CORRECTED IMMEDIATELY.
5. THE TRAFFIC CONTROL REQUIREMENTS SHOWN ON THESE PLANS ARE MINIMUM REQUIREMENTS ONLY AND DO NOT ATTEMPT TO ADDRESS IN DEPTH THE VARIETY OF SITUATIONS THAT MAY OCCUR ONCE CONSTRUCTION HAS STARTED. IN NO WAY DO THE REQUIREMENTS SHOWN ON THESE PLANS RELIEVE THE CONTRACTOR OF HIS RESPONSIBILITY FOR SELECTING THE PROPER TRAFFIC CONTROL DEVICES AND IMPLEMENTATION PROCEDURES THAT WILL ASSURE THE SAFETY OF MOTORIST, PEDESTRIANS, AND WORKERS AT ALL TIMES.
6. CONTRACTOR SHALL BE REQUIRED TO NOTIFY THE CITY OF LAKELAND ENGINEERING DEPARTMENT (901-867-5418) A MINIMUM OF 24 HOURS PRIOR TO COMMENCING CONSTRUCTION OR IMPLEMENTATION A TRAFFIC CONTROL PLAN. ALL TRAFFIC CONTROL DEVICES MUST BE IN PLACE BEFORE CONSTRUCTION ACTIVITY BEGINS.
7. DURING CONSTRUCTION, A MINIMUM OF (1) 10' LANE OF TRAFFIC SHALL REMAIN OPEN TO TRAFFIC AT ALL TIMES.
8. INSTALL LANE CLOSURES WITH THE TRAFFIC FLOW, BEGINNING WITH DEVICES ON THE UPSTREAM SIDE OF TRAFFIC.
9. REMOVE LANE CLOSURES AGAINST THE TRAFFIC FLOW, BEGINNING WITH DEVICES ON THE DOWNSTREAM SIDE OF TRAFFIC.
10. SIGNS SHOWN ON THIS PLAN ARE TO WARN TRAFFIC ABOUT THE CONSTRUCTION. OTHER TRAFFIC CONTROL DEVICES MAY BE REQUIRED DURING VARIOUS PHASES OF CONSTRUCTION.
11. NOTHING IN THIS PLAN IS INTENDED TO SUPERSEDE OR RELIEVE THE CONTRACTOR OF THE RESPONSIBILITY OF INSTALLING THE APPROPRIATE TRAFFIC CONTROL DEVICES IN ACCORDANCE WITH THE CURRENT "MANUAL ON UNIFORM TRAFFIC CONTROL DEVICES FOR STREETS AND HIGHWAYS."
12. ALL TRAFFIC CONTROL DEVICES SHALL BE IN PLACE BEFORE ANY CONSTRUCTION ACTIVITY BEGINS.
13. SIZES OF ALL SIGNS SHALL COMPLY WITH THE MANUAL ON UNIFORM TRAFFIC CONTROL DEVICES (MUTCD).
14. ACCESS TO ADJACENT PROPERTIES SHALL BE MAINTAINED AT ALL TIMES.
15. SIDE STREETS, DRIVEWAY ACCESS, AND BICYCLING AND PEDESTRIAN WAYS (ADA) SHALL BE MAINTAINED AT ALL TIMES.
16. THE CONTRACTOR SHALL NOT BE PERMITTED TO PARK ANY VEHICLES OR CONSTRUCTION EQUIPMENT DURING PERIODS OF INACTIVITY, WITHIN TEN (10) FEET OF THE EDGE OF PAVEMENT WHEN THE LANE IS OPEN TO TRAFFIC, UNLESS PROTECTED BY GUARDRAIL, BRIDGE RAIL, AND/OR BARRIERS INSTALLED FOR OTHER PURPOSES. PRIVATELY OWNED VEHICLES SHALL NOT BE ALLOWED TO BE PARKED WITHIN TEN (10) FEET OF AN OPEN TRAFFIC LANE AT ANY TIME UNLESS PROTECTED AS DESCRIBED ABOVE.
17. THE CONTRACTOR SHALL USE PLASTIC DRUMS WITH TYPE "C" STEADY BURN WARNING LIGHTS (DOUBLE SIDED) TO SEPARATE TRAFFIC FROM THE CONSTRUCTION AREA.
18. THE CONTRACTOR SHALL COVER ALL EXISTING SIGNS THAT CONFLICT WITH THE TRAFFIC CONTROL PLAN SIGNS OR DEVICES DURING CONSTRUCTION AND THEY SHALL REMAIN COVERED DURING CONSTRUCTION AND UNTIL SUCH TIME THAT NO CONFLICT EXISTS.
19. EXISTING STRIPING THAT CONFLICTS WITH THE TEMPORARY TRAFFIC CONTROL DEVICES SHALL BE COVERED OR REMOVED DURING CONSTRUCTION. WHEN CONSTRUCTION IS COMPLETE THE EXISTING STRIPING SHALL BE RETURNED TO ITS ORIGINAL STATE.
20. ALL TRAFFIC CONTROL SIGNS SHALL MEET THE MINIMUM RETROREFLECTIVITY LEVELS SPECIFIED IN THE CURRENT EDITION OF THE MANUAL ON UNIFORM TRAFFIC CONTROL DEVICES (MUTCD).
21. ALL TEMPORARY STRIPING SHALL BE PERFORMED TAPE.
22. INSTALLING LANE CLOSURES WITH THE TRAFFIC FLOW, BEGINNING WITH DEVICES ON THE UPSTREAM SIDE OF TRAFFIC.
23. REMOVE LANE CLOSURES AGAINST THE TRAFFIC FLOW, BEGINNING WITH DEVICES ON THE DOWNSTREAM SIDE OF TRAFFIC.
24. DO NOT STOP TRAFFIC IN ANY ONE DIRECTION FOR MORE THAN 5 MINUTES AT A TIME.
25. BEFORE BEGINNING CONSTRUCTION OR ANY PHASE, THE CONTRACTOR SHALL HAVE THE CITY REVIEW AND APPROVE THE IN-PLACE TRAFFIC CONTROL PLAN.
26. BARRELS AND CONES SHALL NOT BE PLACED IN CROSSWALK.

LEGEND

WORK SPACE

36" DRUM, W/TYPE "C" WARNING LIGHTS

SIGN

DIRECTION OF TRAVEL

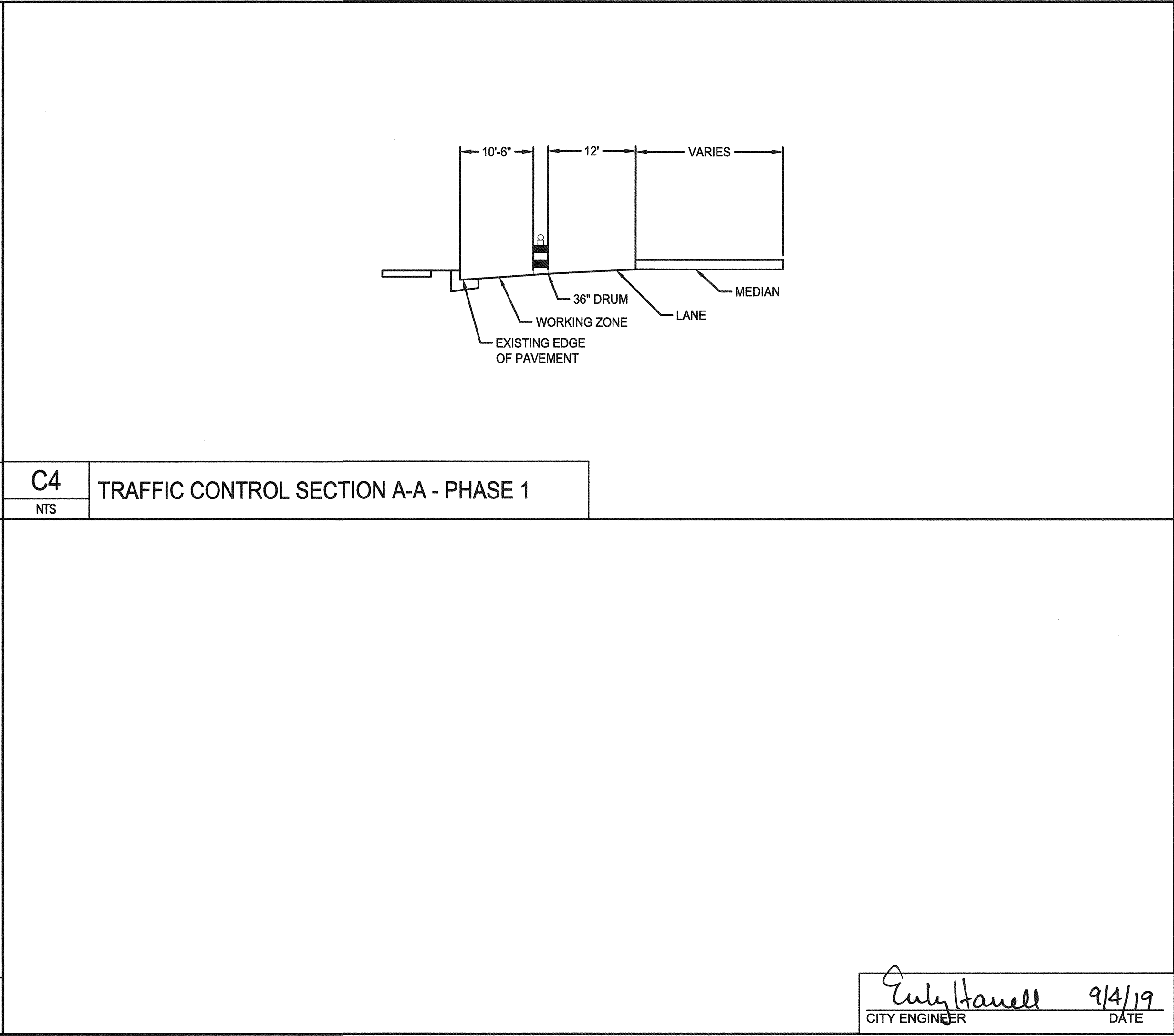
TYPE "C" WARNING LIGHT

4"-6" REFLECTORIZED ORANGE STRIPE

4"-6" REFLECTORIZED WHITE STRIPE

18" MIN

36" MIN



A2H ENGINEERS ARCHITECTS PLANNERS

A2H, INC.
3009 DAVIES PLANTATION ROAD
LAKELAND, TN 38002
P. 901.372.0404
WWW.A2H.COM

DAVID M. SMITH
REGISTERED PROFESSIONAL ENGINEER
AGRICULTURE
No. 104874
STATE OF TENNESSEE

THE LAKE DISTRICT
THE LAKE DISTRICT
PLANNED DEVELOPMENT
LAKELAND, TN

PHASE 1 CONSTRUCTION DOCUMENTS

REVISIONS

PROJECT NO. 15108-01 DATE 08/22/2019
DRAWN SSM CHECKED DMS

TEMPORARY TRAFFIC CONTROL PLAN

C7.04

Emily Hanwell 9/4/19
CITY ENGINEER DATE